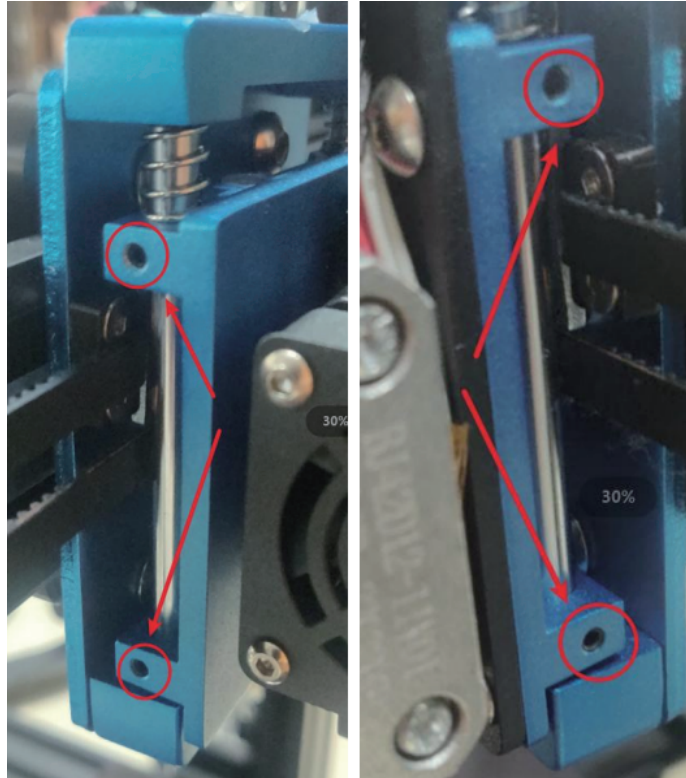


SV04 Right Extruder Knob Adjustment Guide

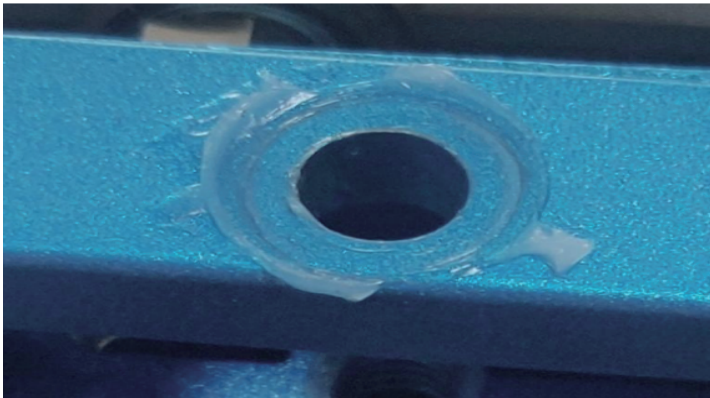
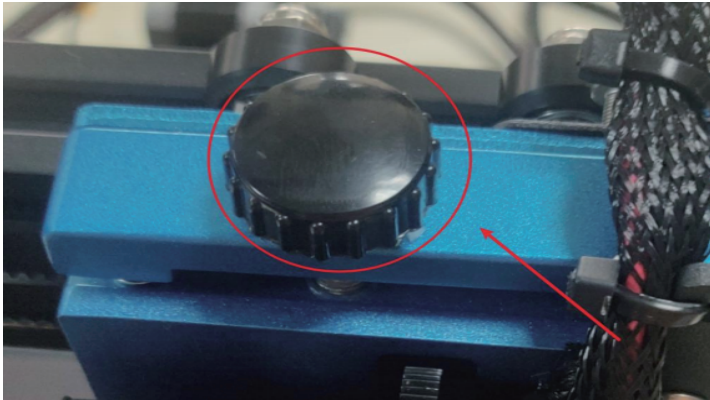
01. This article is to share some problems and solutions when using the right extruder leveling knob.

1 / If you have loosened the four fastening screws on the left and right sides as shown in the figure below, and it's still hard to rotate the leveling knob.



01.

a. Please unscrew this leveling knob completely.



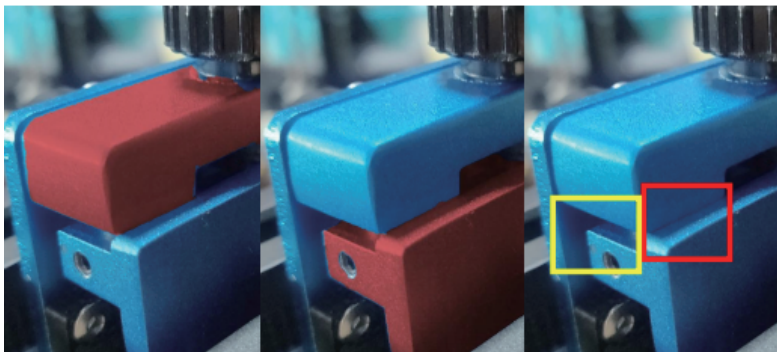
b. Apply grease to the head of the thread and the bottom surface of the black part, as shown in the red part, and then reinstall it, the situation will improve a lot



02. This article is to share some problems and solutions when using the right extruder leveling knob.

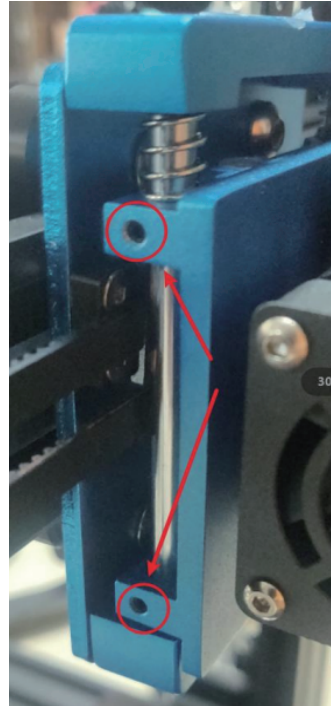
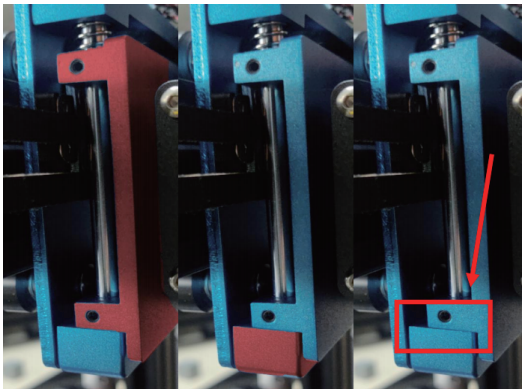
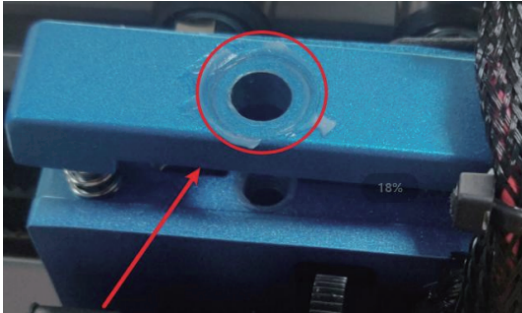
* First of all, the normal state of the slider board should be like this:

When the knob is fully tightened clockwise, the slider plate should rise to the top and contact the upper stopper and keep it flush. Note that the top refers to the red square mark in the second picture, not the yellow one.



02.

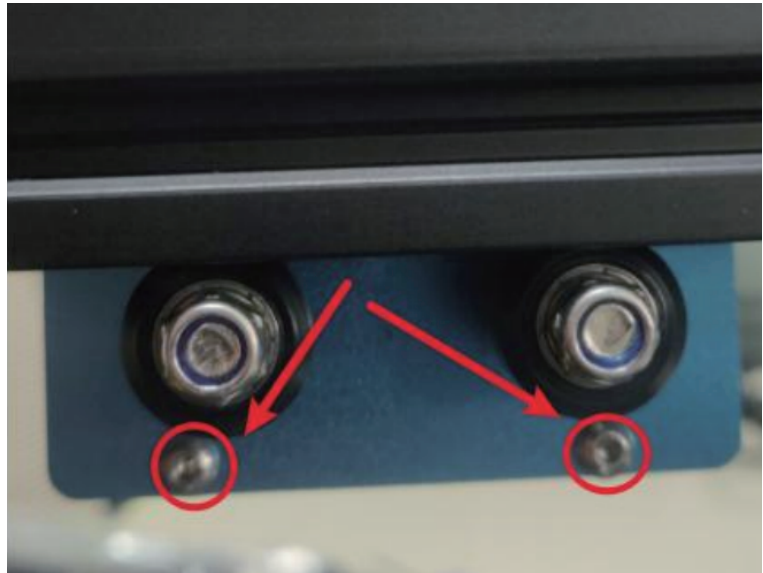
When the knob is completely loosened, then loosen the four Set screws on the left and right sides of the slider plate (just loosen them, don't have to unscrew them) (use a H1.5 hexagon socket screwdriver) (slowly, several times, to avoid sliding teeth), the slider plate should be lowered to the lowest contact with the lower block and kept flush.



02.

If your machine cannot achieve the above phenomenon, it may need to be adjusted. You can adjust it through the following steps:

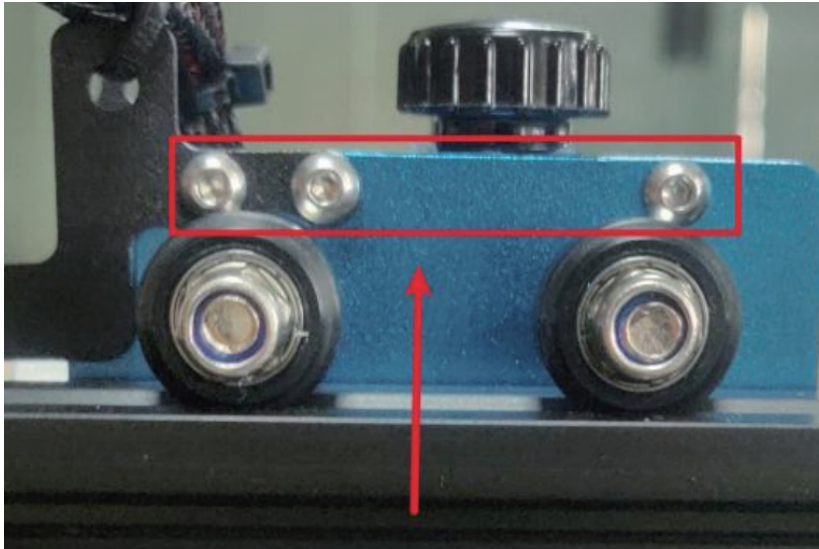
a. The slider plate cannot move to the bottom, If it cannot be kept flush or there is still a certain distance, Based that you have completely loosen the knob and slightly loosen the four screws on the left and right sides of the slider plate, loosen the two screws at the bottom of the back panel behind the Extruder, as shown in the figure below (just loosen, no need to unscrew them), at this time the slider plate should have been lowered to the bottom. After manually adjusting the position of the lower block and the slider plate, tighten the two screws again and the adjustment is completed.



02.

b. The slider plate can't be adjusted to the top

If it cannot be raised to the top after tightening the knob, please keep the position that has reached, and then loosen the three screws on the back side, (no need to unscrew them, just loosen it slightly), and then tighten the black knob on the top again until the top can be flush with the slider plate. After adjustment, tighten the three screws on the back to restore, and the adjustment is completed.



Please adjust it according to the actual situation. If there was still the problem after the adjustment, it is recommended to contact Sovol customer service for better advice