



Installation of LightBurn for HP Machines

608 Trestle Point

Sanford, FL 32771

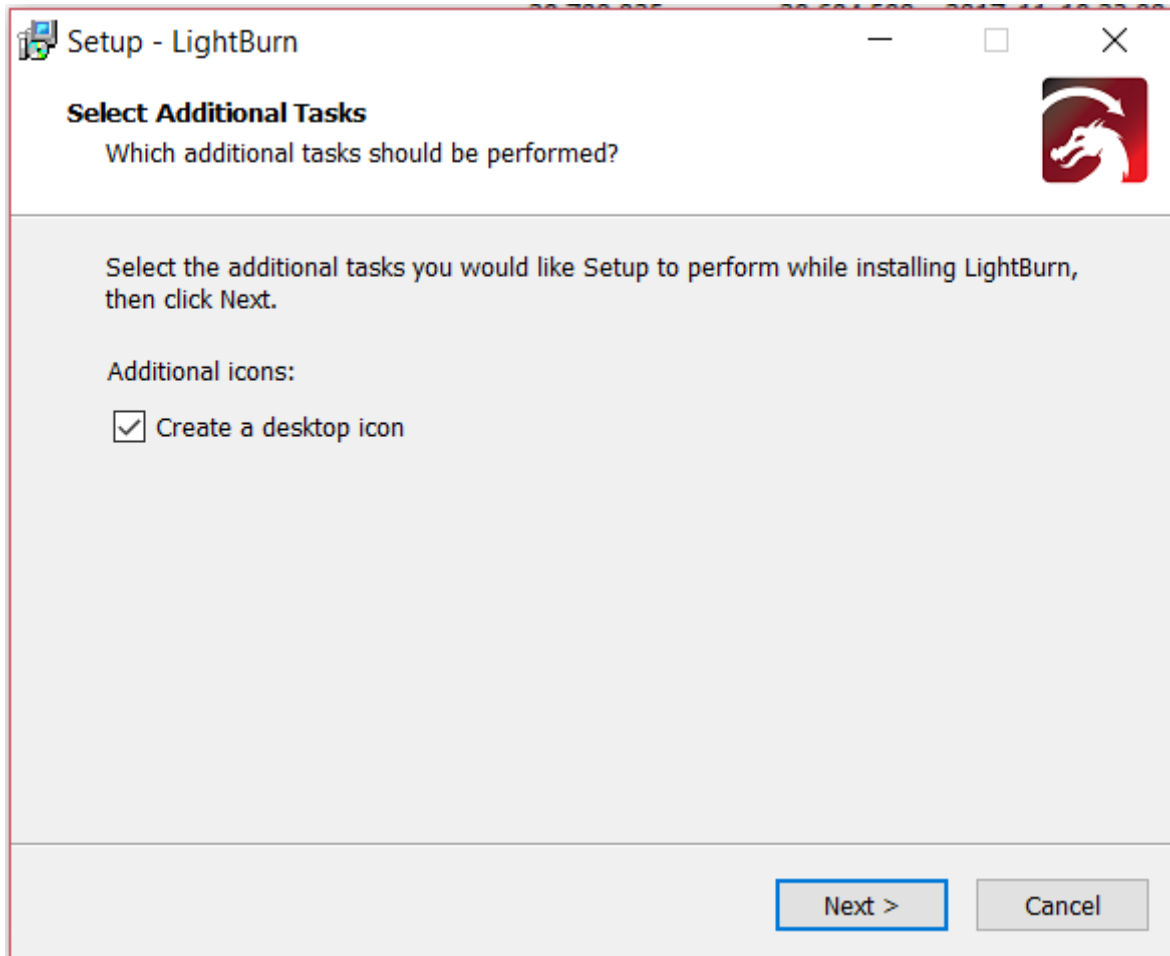
Toll-Free: (888) 652-1555

Local: (407) 878-0880

Fax: (407) 878-0837

WWW.BOSSLASER.COM

Windows Installation



1. Launch the installer executable located on your BOSSLASER USB flash drive
2. Windows may ask if you trust the software, as LightBurn is not currently digitally signed
3. Select if you would like to create a desktop icon
4. Click *Install*
5. Click *Finish*

That's it! Locate the LightBurn icon to launch the program

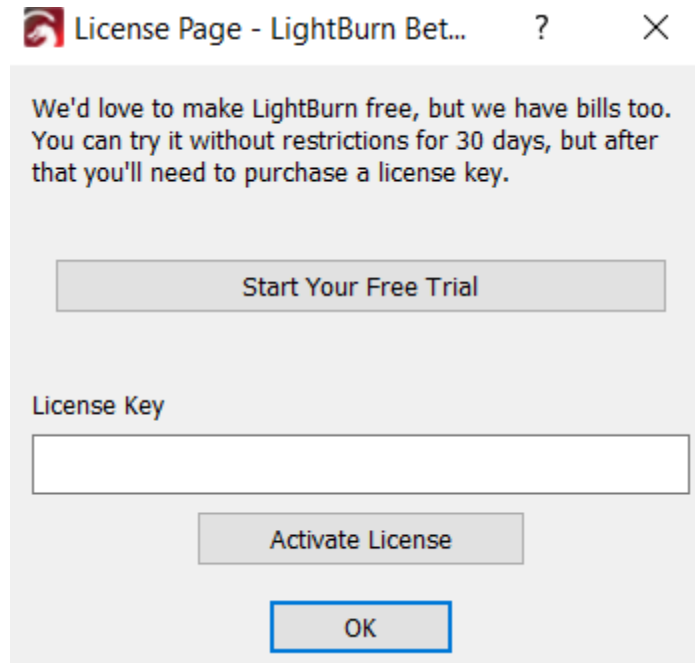
Mac/OSX Installation

1. Locate the DMG (disk-image) file on your BOSSLASER USB flash drive
2. Double-click the .zip file to extract the DMG (disk-image) file
3. Double-click the LightBurn.dmg file to mount it
4. Drag the LightBurn application into your applications folder
5. Launch LightBurn from the launcher as normal
6. You can now eject the DMG file (drag it to the trash bin)

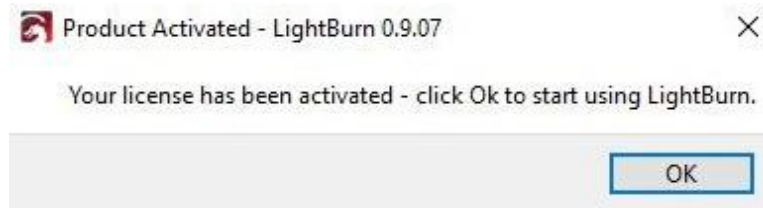
Entering your License Key

When you first start LightBurn you will be prompted to enter your license key or start your trial version. If you do not have a license key you can click the *Start your Free Trial* button to begin your 30-day unrestricted trial of the software.

If you have your license key, enter it in the License Key box and click the *Activate License* button.

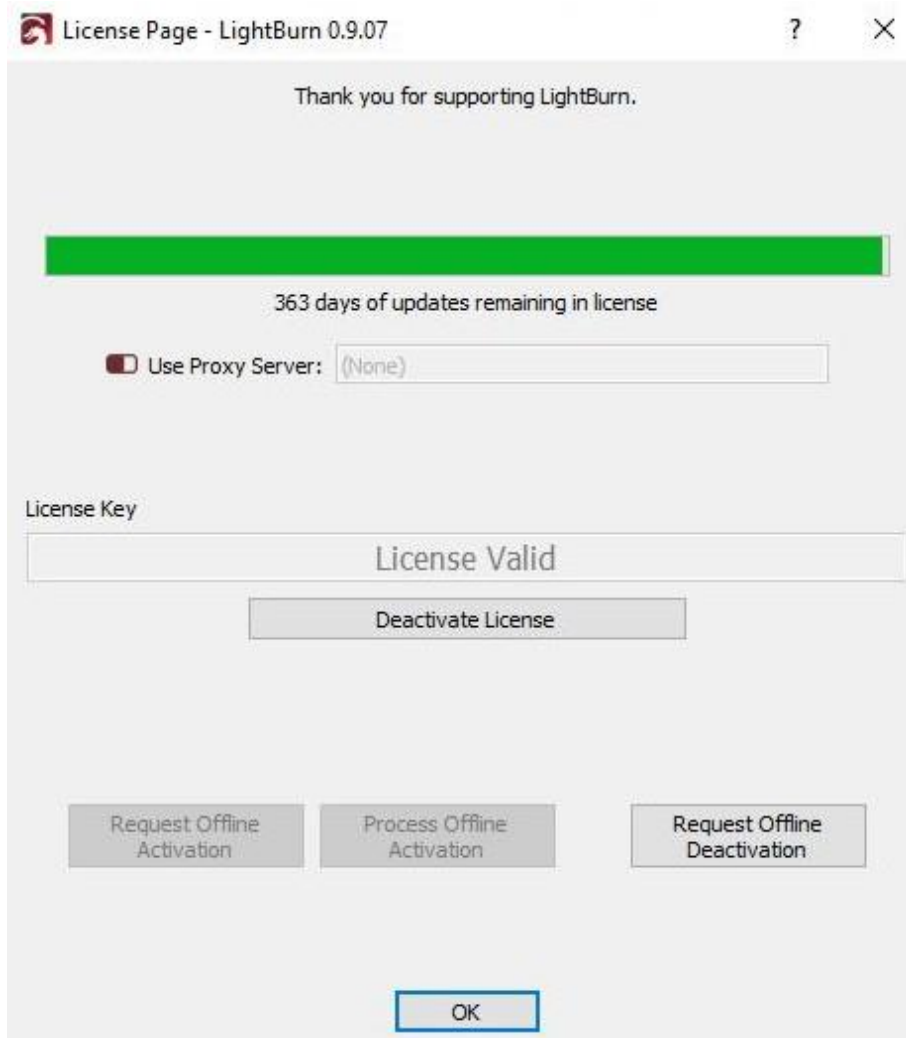


Once you enter and activate a valid license key you will be prompted to restart LightBurn for the license to take affect.



Checking your license status

You can check your license status at any time or enter a new license key by clicking Help > License Management



Installing USB Drivers

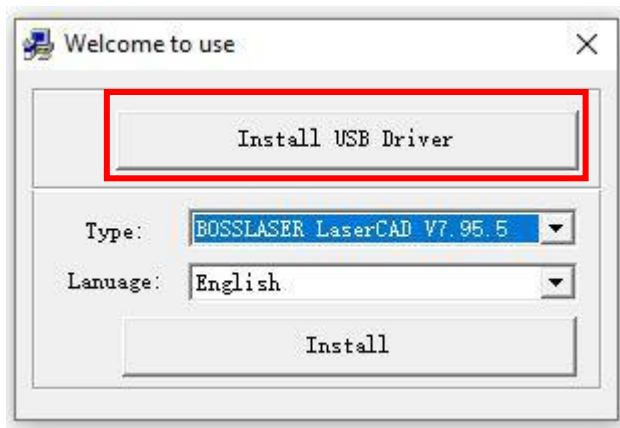
Locate the Boss Laser USB Flash Drive that was provided to you with your machine. Plug this into your PC and open the USB Flash Drive. You will see the **Setup.exe application** for LaserCAD as shown below (in order to install the USB Drivers for your PC to recognize the machine, we will have to run the LaserCAD Installation):

Name	Date modified	Type	Size
BOSSLASER LaserCAD V7.95.5	12/13/2019 4:08 PM	File folder	
LightBurn Manual.pdf	11/27/2019 1:05 PM	PDF File	6,944 KB
LightBurn.V0.9.10.dmg	3/19/2020 1:08 PM	DMG File	24,210 KB
LightBurn-v0.9.10.exe	3/19/2020 1:08 PM	Application	46,979 KB
TeamViewer_Setup.exe	12/11/2019 3:53 PM	Application	25,371 KB

Once you have launched the **Setup** for LaserCAD, the window below should pop up on your screen:

Name	Date modified	Type	Size
AWCDoc	8/14/2017 12:44 PM	File folder	
AWCLanguage	12/13/2019 4:08 PM	File folder	
AWCRes	12/13/2019 4:08 PM	File folder	
Setup.exe	9/29/2017 5:07 PM	Application	76,444 KB
SetupCfg.ini	11/1/2017 10:57 AM	Configuration sett...	1 KB

Before installing the USB Driver, make sure you have the USB cable plugged into the PC from the machine. Then from there, you can click on the **Install USB Driver** (as shown below in red):



Note: A window will appear shortly after you have clicked the **Install USB Driver button**. This will be the actual step to install the USB Driver for your PC. Please follow through the windows accordingly.

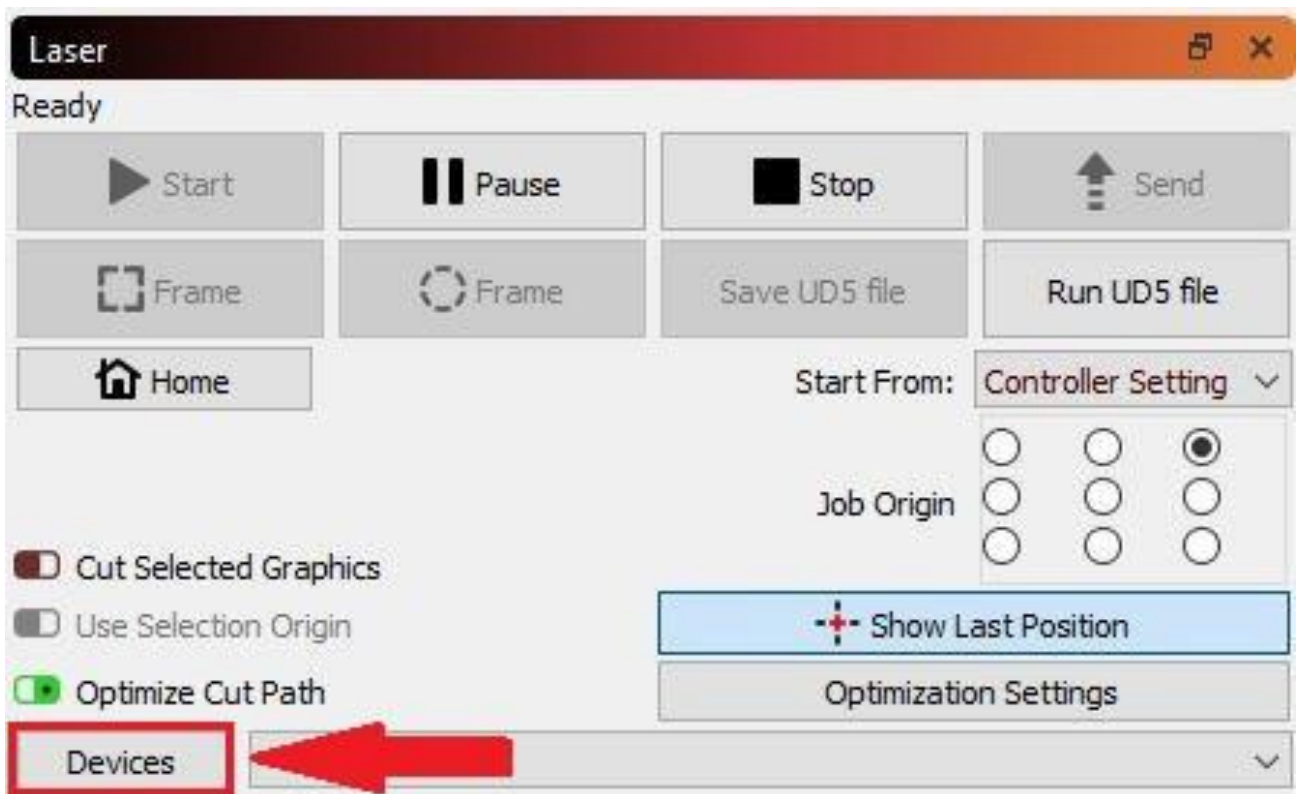
Device Setup

If you've never run LightBurn, the first thing you need to do is set up your machine layout (work area size and zero / origin) in the settings, and then add your device type in the devices box. If you have more than one type of laser / device, you can add more than one and choose a default. At present, the layout and page size aren't associated with the device, but this will be changed to that in the future.

Adding a new device (Laser)

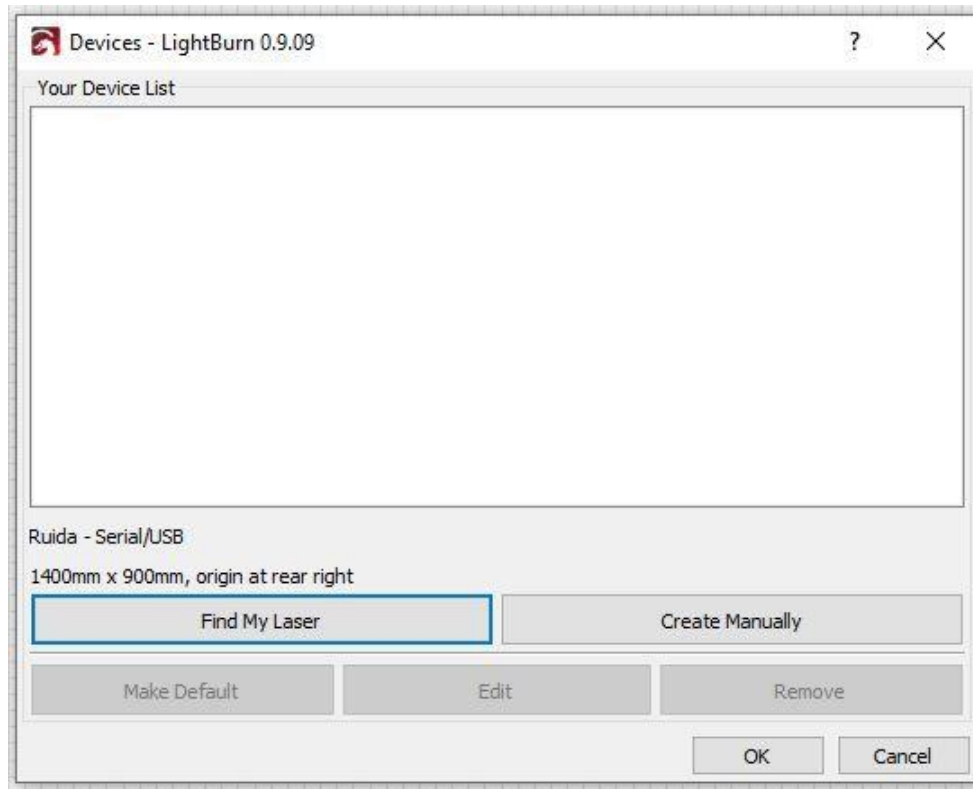
If you've never used LightBurn before, you'll need to tell it a couple things about your hardware to get going.

1. In the lower-right of the display is a box called "**Laser**" - on the bottom of it is a button called "**Device**" (as shown in red with the arrow pointed to it):



INSTALLATION OF LIGHTBURN FOR HP MACHINES

2. Click the **Find my Laser** button (highlighted in blue, below):

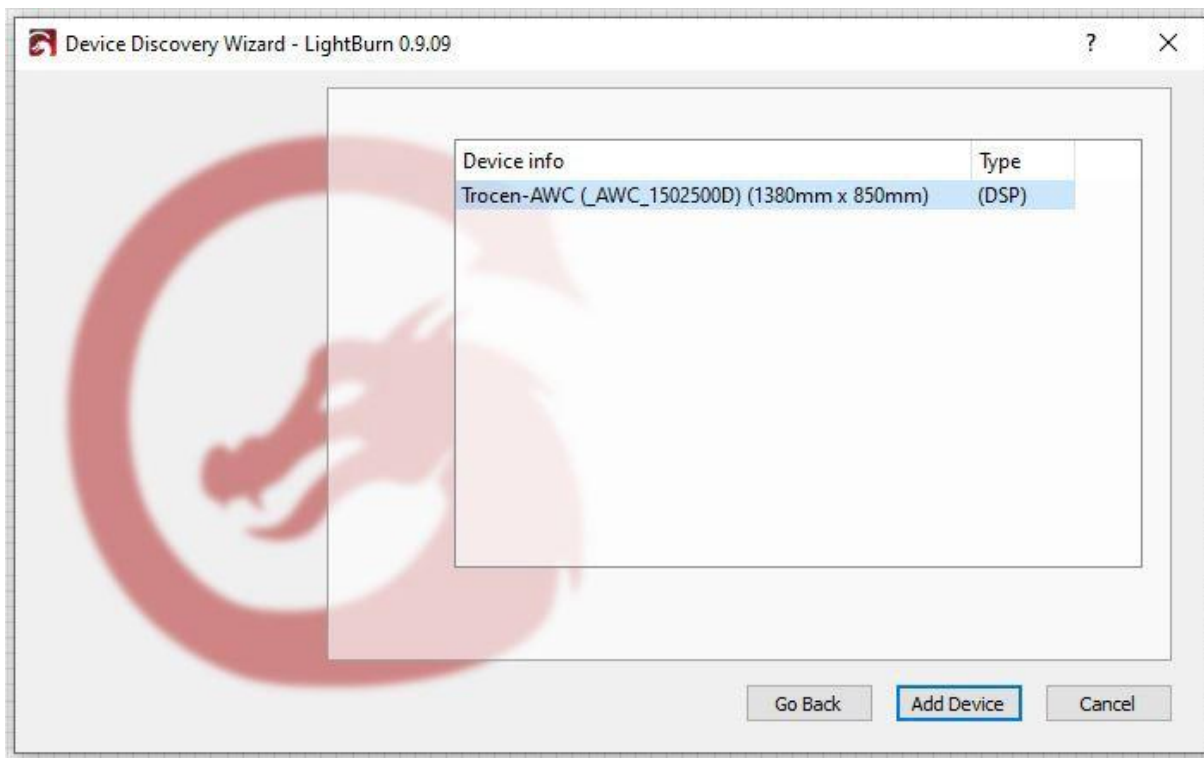


3. The Device Discovery Wizard should appear (as shown below). Click the **Next** button for LightBurn to automatically search for your machine:

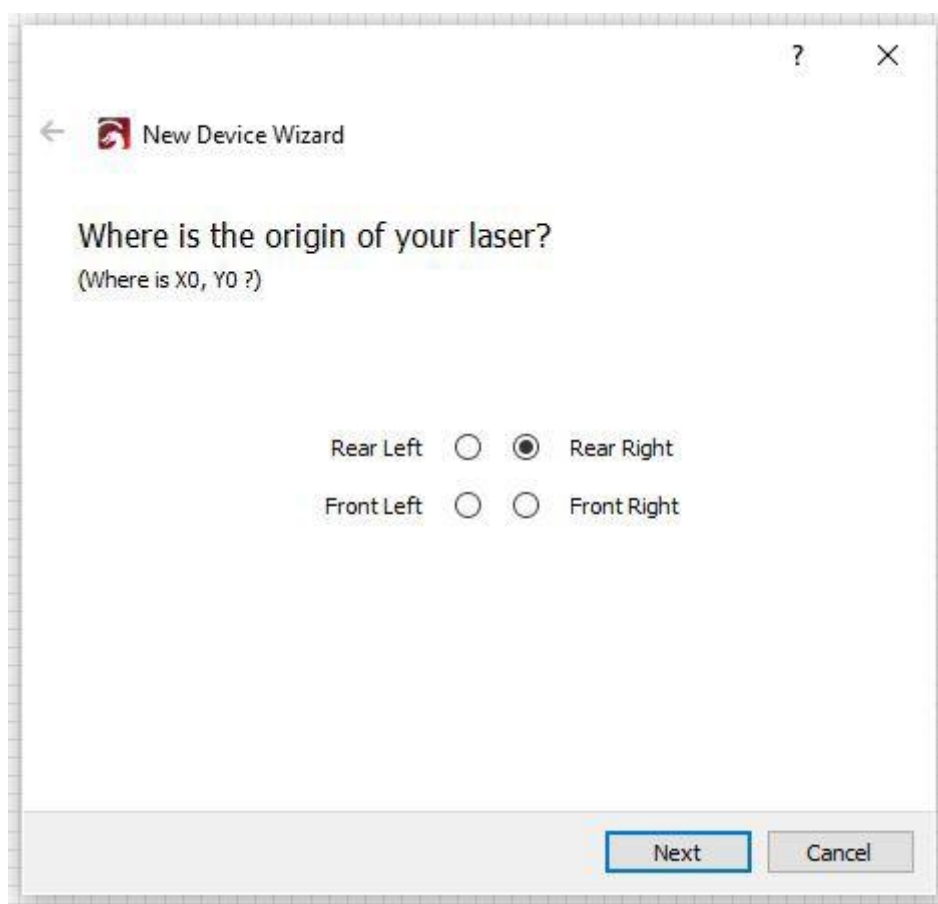


INSTALLATION OF LIGHTBURN FOR HP MACHINES

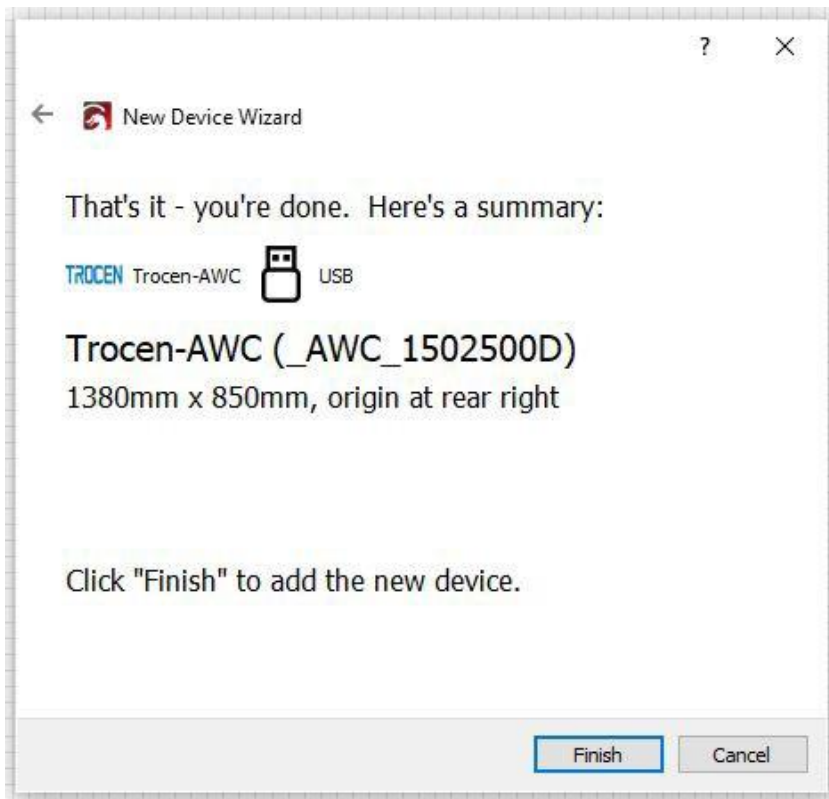
4. Once the Device Discovery Wizard has finished, your machine should now be listed under **Device info**. For this example, the **HP-3655** machine is connected to the PC. Select this device and click the **Add Device** button (highlighted in blue):



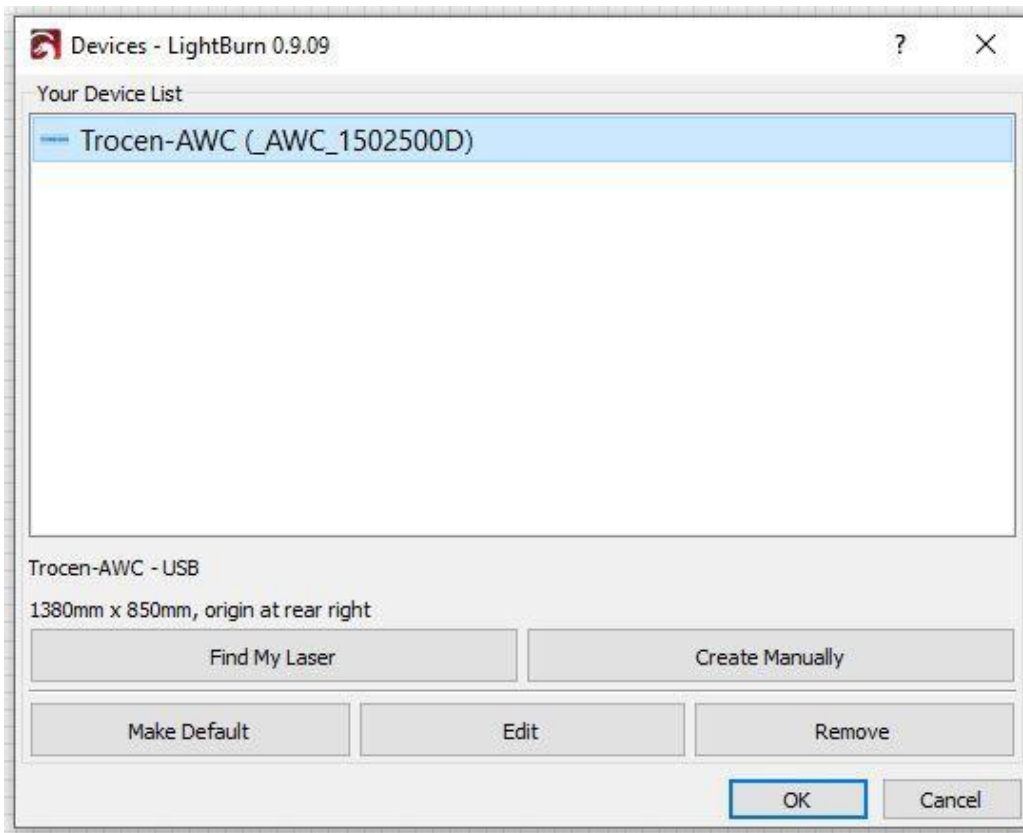
5. Now select **Rear Right** for the origin of your laser. The reason why we choose this is because the machine's DATUM point is located at the top right of the machine.



6. Click **Finish** to add your laser machine to LightBurn.



7. For our HP-3655 example, our machine is listed as shown below. Select this device, then click on **OK**.



You have now successfully setup your machine with LightBurn!